

TRACK & FIELD SOLUTIONS

LYNX SYSTEM DEVELOPERS, INC.

MVP PACKAGE

WHEN YOU WANT THE VERY BEST



MVP PACKAGE:

INCLUDES ALL THE ITEMS FROM THE GOLD PACKAGE

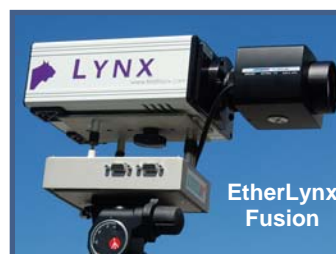
Plus: All The Technology Needed to Meet National and International Regulatory Standards

- **Two-Camera Results System** – The MVP Package includes an EtherLynx Fusion camera as the primary capture device in addition to the EtherLynx 2010. This two-camera solution gives users the advantage of having reverse-angle results for full coverage of the finish line.
- **The EtherLynx Fusion Camera** – The latest of the range of EtherLynx cameras; it captures images up to four times richer in image quality than the standard EtherLynx 2010. In this two camera system you add the Fusion to the EtherLynx 2010 model, and you have the international benchmark for photo finish technology.
- **Ultra-Sonic Wind Gauge** – Wind gauges aren't just a convenient accessory – in fact, governing bodies like the NFHS, USATF and IAAF, require the strict use of gauges in sprint events in order for new records to be considered valid.
- **Wind Gauge Data Integration Software** – Wind gauge data is recorded as required during sprint events and instantly integrated into the FinishLynx software for printing with results.

COMPONENTS

- **Primary: EtherLynx Fusion**, 2000 frames/second, timer-enabled, full color
- **Camera 2: EtherLynx 2010**, 1000 frames/second, monochrome
 - C-mount f1.2, 12.5-75mm zoom lens (x2)
- RadioLynx Wireless Start (Receiver & Transmitter)
- Start Sensor & Capture Button
- Complete Professional Tripod and mounting hardware for precision adjustment (x2)
- All-inclusive Power, Ethernet, & Start Cable Set
- Print Laminator & 50 Foam Boards for instant revenue generation with photo-finish image sales
- Lynx Tech Support & 1-Year Renewable Warranty
- Motorized Lens & Mounting Platform (x2)
- 9-Digit Alphanumeric Display (with Case & Charger)
- **SerialLynx Network Adapter**
- **10/100 Base-T 8 Port Switch & Button Splitter**
- **Ultrasonic Wind Gauge**
- FinishLynx32 Photo-Finish Software
 - Auto-Capture & PhotoEye Plug-in
- LynxPad Event Management Software

MVP PACKAGE: \$24,995



FEATURES AND BENEFITS OF THE MVP PACKAGE

The MVP Package is an unrivaled, two-camera photo finish system that not only benefits your athletes, but also your entire program, from parents to officials. Although designed specifically for high school athletics in the USA, the quality of this package is so high that it meets the standards approved by the International Association of Athletics Federations (IAAF) and enables you to produce accurate, ratifiable results for all track events: Indoors, Outdoors, or even Cross Country.

In this package, the EtherLynx Fusion is the primary photo finish camera: the images produced by the Fusion can be up to four times more detailed than those from a standard EtherLynx 2010 model. By combining these two cameras, and integrating them with the other components in the MVP package, Lynx has created one of the most powerful timing solutions available to high school athletics programs.

LYNX F.A.T. RESULTS SOFTWARE

The MVP Package comes equipped with multiple applications and plug-ins which help create an integrated results network at your venue. You can import/export your athlete data as well as share results information to and from network devices – including your photo-finish cameras, wireless start, wind gauge, and infield display. You can even connect to any compatible scoreboards at your venue.

INTEGRATE YOUR NETWORK WITH SERIALYNX

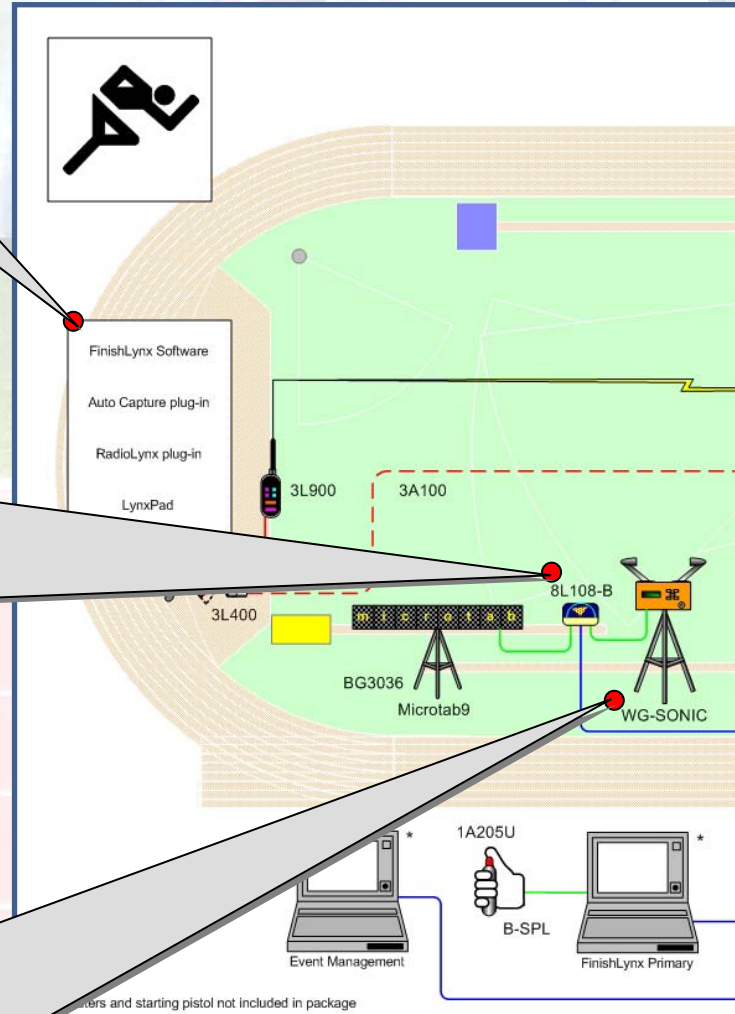


Because Lynx technology allows you to adjust your network configuration, you can tailor your components for different formats and events. The SerialLynx unit can control the flow of your data to and from serial devices like scoreboards and wind gauges.

GILL ULTRASONIC WIND GAUGE



The Ultrasonic Wind Gauge is a key addition to the MVP package because it satisfies the I.A.A.F. and NFHS requirements for ratifying record-breaking times. In order for a new Track & Field record to be considered valid, it must be accompanied by a reading from a certified device that accurately measures head/tail winds during the race.



**BUILD THE VENUE OF YOUR DREAMS
WITH THE MVP PACKAGE.**

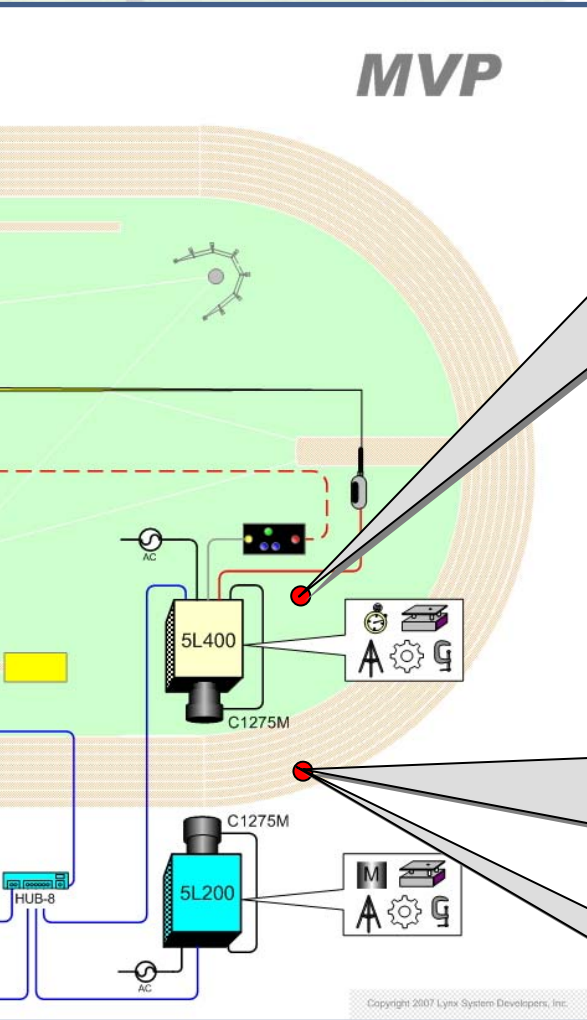
EXPLORING THE MVP PACKAGE

ETHERLYNX FUSION PHOTO-FINISH CAMERA



The EtherLynx Fusion is the most versatile photo-finish camera offered by Lynx. It combines the best features from the EtherLynx 2000 (light sensitivity) and EtherLynx Pro (customization) into one powerful device. The Fusion comes standard with 2000 fps and 1000 pixels of image height capabilities, and can even be upgraded with *FLEX* or Wi-Fi options.

MVP



DUAL REMOTE POSITIONING MOUNTS



Both the EtherLynx 2010 and EtherLynx Fusion cameras come equipped with Remote Positioners so you can easily adjust a camera's *tilt*, *pan*, and *swivel* from the Lynx software. And with the auto-align feature also included in this package, aligning your camera with the finish line has never been easier.

RESERVE-ANGLE CAMERA CONFIGURATION

The MVP Package includes two cameras for complete photo-finish coverage from both sides of the finish line. Here, the EtherLynx 2010 functions as the reverse-angle camera and the powerful EtherLynx Fusion is included as the primary, timer-enabled capture device.

MVP PACKAGE:

\$24,995



F.A.T. RESULTS WITH THE LYNX GOLD PACKAGE

The MVP Package is equipped with all the latest technology and its components are seamlessly integrated to create a real-time network for managing your meets. Operating the results network is simple and yet this solution represents the very finest technology available.

As well as adding the 2000 fps Fusion camera to the more than two-dozen high-end Gold Package components, the MVP Package also includes an IAAF-compliant wind gauge. Because all governing bodies including the NFHS state that a wind gauge must be used for ratifying record-breaking times, it has become a necessity in all major competitions. In fact, this same device has been used at the 2004 and 2008 US Track & Field Olympic Trials to verify the results of America's finest athletes.

When you invest in Lynx results technology, you're joining a community of over 1000 other high schools across the country that have made the same commitment to their athletics programs. Lynx technology is used at every level of competition, and more importantly, is manufactured and serviced by our skilled in-house technicians. No matter how you use your system, it's great to know that a Lynx technician is only a phone call away.

WHY UPGRADE TO MVP?

INCLUDES EVERYTHING FROM THE GOLD PACKAGE

Plus

- ETHERLYNX FUSION COLOR CAMERA
- SERIALYNX NETWORK ADAPTER
- PORT SWITCH & BUTTON SPLITTER
- ULTRASONIC WIND GAUGE

The EtherLynx Fusion is our most versatile photo-finish camera. It captures at 2000 fps and combines the light sensitivity of the EtherLynx 2000 and customization of the EtherLynx Pro into one powerful device.

The SerialLynx unit and Port Switch help create a seamless results network. SerialLynx controls the flow of data to and from serial devices like scoreboards and wind gauges, while the 8-Port Switch combines all your Ethernet devices into a single network. Finally, the Ultrasonic Wind Gauge accurately measures head/tail winds during events so record-breaking times can be recognized by the NFHS.

THE VALUE OF A REVERSE-ANGLE CAMERA

The MVP Package gives you two time-synchronized viewpoints from opposite sides of the finish line to aid in evaluating close races, or you can use one camera on each of two finish lines; the high speed Fusion camera serves as your primary source for reliable photo finish results, while the EtherLynx 2010 camera provides the unique reverse-angle image perspective that only a dual-camera system can provide.

The image on the right is a screenshot of the FinishLynx software. This capture shows the results of a race using a dual-camera system that produces two time-synced images from opposing sides. This setup is especially valuable in Distance and Cross Country races when you need to evaluate hip numbers instead of lanes.

