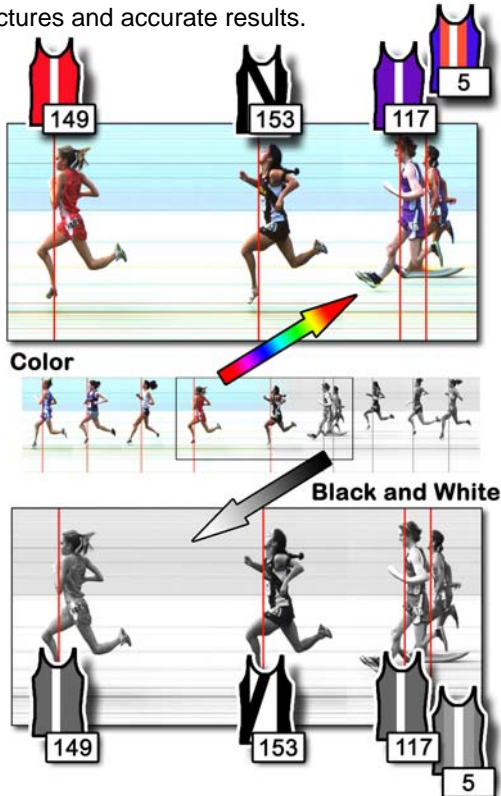


IMPROVED CAMERA CONTROL & IMAGES

With the Silver Package you can make adjustments to the position of the camera and lens settings remotely from the FinishLynx software – and you will have all the benefits of full color images.

When you combine the Remote Lens and Remote Camera Positioner upgrades with the auto-align feature in the FinishLynx Software, aligning the camera on the finish line is a snap. Simply adjust the focus, make sure you can see athletes in the nearest and furthest lanes, and let the software take care of the rest. Get clear pictures and accurate results.



COMPONENTS

- **Camera: EtherLynx 2010**, 1000 frames/second, timer-enabled, fully-upgradeable
 - C-mount f1.2, 12.5-75mm zoom lens
 - **Color Option: for Rich Full-Color Images**
- Start Sensor & Capture Button
- Complete Professional Tripod and mounting hardware for precision adjustment
- All-inclusive Power, Ethernet, & Start Cable Set
- Print Laminator & 50 Foam Boards for instant revenue generation with photo-finish image sales
- Full Access to Lynx Technical Support
- 1-Year Renewable Warranty
- **Remote Lens Upgrade: control Focus, Zoom, Iris**
- **Remote Camera Positioner: control Pan, Tilt, Swivel**
- **FinishLynx32** - Photo-Finish Software
- **LynxPad** - Event Management Software

SILVER PACKAGE: \$11,295



FEATURES AND BENEFITS OF THE SILVER PACKAGE



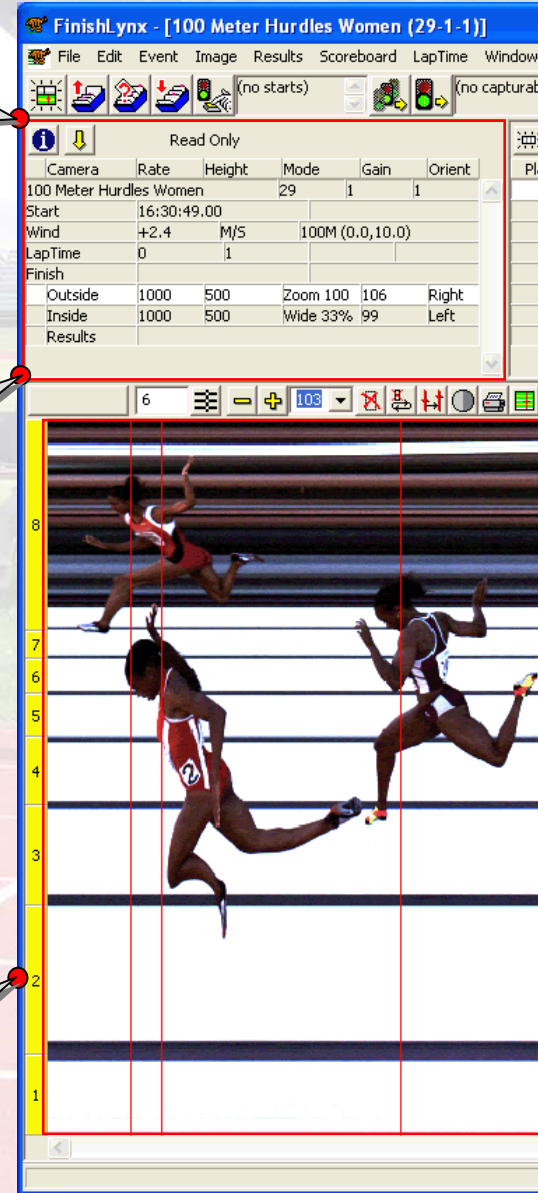
Because finish line cameras are often mounted well above eye-level, the Remote Lens and Remote Positioner upgrades ensure that hardware is easily accessible and adjustable. These motorized accessories allow operators to make mid-meet corrections to account for changes in glare, shadows, or camera positioning. A simple click on an icon in the FinishLynx software will adjust your lens or camera angles without having to climb a ladder to reach your camera.

And with color images, athlete identification is so much more certain. Even the best hip numbers can fall off or be obscured during races. In those situations the next best thing is the ability to make a quick and accurate assessment of an athlete's identity based on the affiliation indicated by their uniform color or design.

FINISHLYNX PHOTO-FINISH RESULTS INTERFACE

The FinishLynx software was first created over a decade ago by Lynx engineers as the premier interface for capturing, logging, and transmitting real-time F.A.T. results. Over the years, FinishLynx has been continually improved thanks to customer feedback and in-house software development. Today, our FinishLynx software is more powerful and versatile than ever.

FinishLynx integrates photo-finish images, F.A.T. results, and network hardware into a single, easy-to-use interface. From multiple FinishLynx cameras to countless third-party accessories, FinishLynx allows operators to control their entire results network from a laptop computer.



REAL-TIME EVENT PANEL

The top left panel on the FinishLynx software can display a variety of real-time information during your event and varies in complexity depending on the hardware attached to your system.

By default, the interface displays the event name (imported from meet management program data) as well as the start time and camera details. Should you ever decide to expand your system, the software can also display real-time data from wind gauges, multiple cameras, and FinishLynx plug-ins.

RICH, FULL-COLOR PHOTO-FINISH IMAGES

Because the Silver Package includes a color upgrade for the EtherLynx 2010 camera, you'll enjoy F.A.T. results with full-color photo-finish images.

Producing color images improves your F.A.T. results in several ways, including:

1. Easier athlete identification by jersey color
2. Crisp contrast/resolution for hip numbers
3. Rich color images for successful printing, laminating, and selling images at meets

LEARN MORE ABOUT THE FINISHLYNX SOFTWARE

FINISHLYNX RESULTS PANEL

The FinishLynx results panel organizes and displays all your real-time athlete data during events. Easily import your athlete info and lane numbers from a meet management program before a meet. When evaluating an image, results are included alongside their ID and lane numbers – integrating your data and photo-finish images for the most impressive F.A.T. results available.

The screenshot displays the FinishLynx software interface. At the top, there is a menu bar with 'Help' and a toolbar with various icons. Below the toolbar is a table with the following columns: Race, Id, Lane, First Name, Last Name, Affiliation, License, Time, and Delta Time. The table contains 8 rows of data. Below the table is a photo-finish image showing several athletes running on a track, with vertical red lines indicating the finish line.

Race	Id	Lane	First Name	Last Name	Affiliation	License	Time	Delta Time
1	240	7	Donica	Merriman			13.09	13.09
2	164	2	Danielle	Carruthers			13.11	0.02
3	246	3	Alesha	Peel			13.27	0.16
4	186	6	Lolo	Jones			13.45	0.18
5	335	4	Nichole	Denby			13.50	0.05
6	406	8	Agenta	Rosenblad			13.64	0.14
7	223	5	Emily	Waibel			13.69	0.05
8	386	1	Hasani	Roseby			13.77	0.08

LYNXPAD MEET MANAGEMENT INTEGRATION

LynxPad is a meet management program that organizes athlete names, ID's, schools, and seed marks in a simple, file-based format. Because LynxPad is fully integrated with FinishLynx, you can generate complete F.A.T. photo-finish results with the simple click of a button.

NFHS APPROVED F.A.T. RESULTS

FinishLynx integrates crisp photo-finish images with timing results that are accurate to within 1/1000th of a second. That means no matter how close the finish, you'll enjoy the advantage of easily visible (and printable) F.A.T. results from an NFHS approved system.

3-9-6: When [F.A.T.] is used, timing shall be recorded in one one-hundredths of a second and all ties for place finishes and/or determining qualifiers for a subsequent round shall be broken by using timing to one one-thousandths of a second if the system allows (NFHS.org).

SILVER PACKAGE:

\$11,295



F.A.T. RESULTS WITH THE LYNX SILVER PACKAGE

Lynx packages provide all the F.A.T. accessories you need to produce clear, accurate results at meets of any size. With F.A.T. results that are accurate to within 1/1000th of a second, the Silver Package satisfies the NFHS rule that says, “*all ties for place finishes and/or determining qualifiers for a subsequent round shall be broken by using timing to one one-thousandths of a second if the system allows*” (NFHS.org)

The Silver Package will generate high-quality images containing up to 32,756 colors, so you'll be able to print and sell photo-finish images at meets year-round to earn valuable revenue for your program.

Purchasing a Lynx F.A.T. system is an investment that will benefit your program for years to come. If your needs change over time, upgrading your system is as simple as adding new components to your existing package – nothing you buy will ever go to waste.

WHY UPGRADE TO SILVER?

INCLUDES EVERYTHING FROM THE BRONZE PACKAGE

Plus

- COLOR OPTION FOR ETHERLYNX 2010
- REMOTE LENS UPGRADE
- REMOTE CAMERA POSITIONER

The Color Upgrade allows the EtherLynx 2010 camera to produce full-color images (instead of monochrome), while the Remote Lens and Positioner Upgrades allow you to align and adjust the camera from Lynx software. Remote features include: Focus, Zoom, Iris, Pan, Tilt, Swivel, and Auto-Align.

LYNX F.A.T. SOLUTIONS: SILVER PACKAGE DIAGRAM

